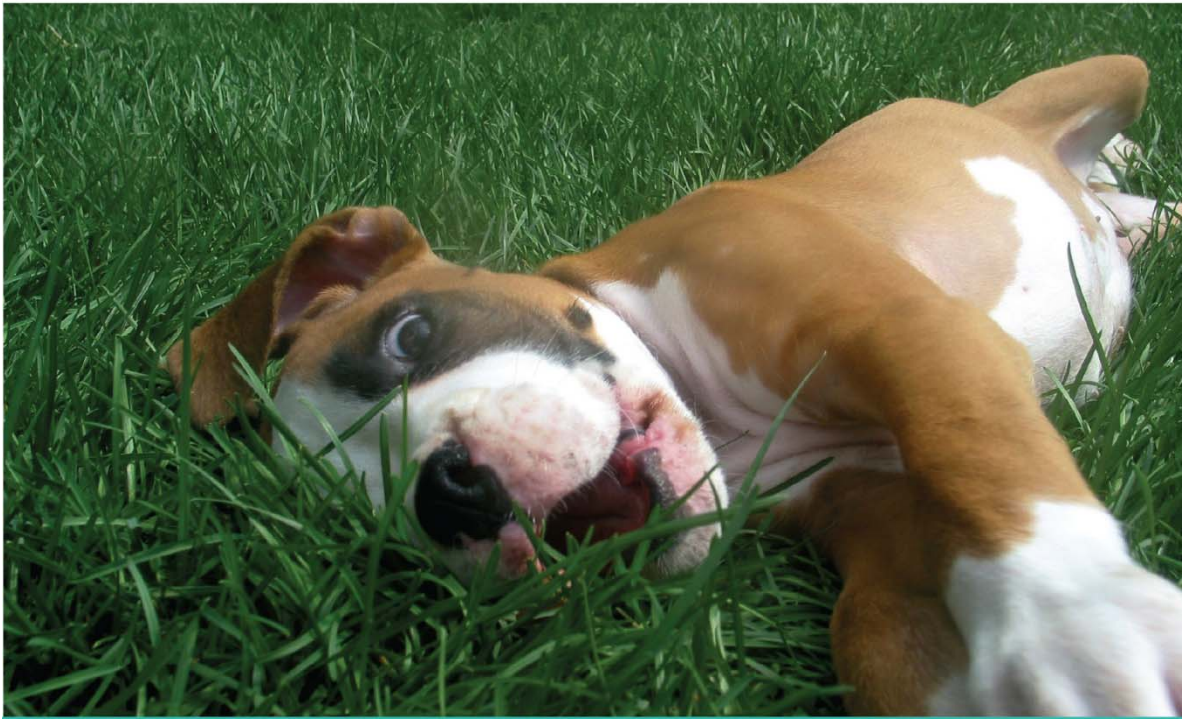


# SHOR-LINE®



## Choosing a Run System for Your Facility

Our Purpose Is To Serve You.

[www.shor-line.com](http://www.shor-line.com)  
1.800.444.1579

# The Shor-Line Goal

## Our goal is...

To consistently deliver the service and products our customers' want and expect.

But, we take this statement a step further and ask a few questions about what it really implies.

## How can we achieve our goal?

By continually improving our people, our products, and our processes.

# Questions...

How do we improve upon our people, our products,  
and our processes?

By changing how we do things in the organization.

How do we as an 'organization' ultimately change?

An organization becomes changed through individual change first!

## More Questions...

Individuals first begin to change through shared learning.  
What is the single most basic element of all shared learning activities...?

Conversation.

Conversation starts the beginning of any improvement.  
These conversations must start with our customers.

# Conversations & Questions

Enough of our questions, now it's your turn.

This is most likely the beginning of many efforts to improve your practice. We want to help you accomplish this task in any way we can. Please do not hesitate to ask any questions. The use of conversations and questions is how you improve your practice and we improve our company.

# Introduction

Choosing the right run system is an important consideration for our customers.

Shor-Line knows quite well that customer's expectations will vary; however, we feel it is reasonable to expect that our customers (and their patients) want a run system that is: safe, well lit, well ventilated, reliable, and easy to clean as well as maintain.

# 5 Basic Run Systems

5 basic run designs prevalent in the marketplace today are:

- Full height cement masonry unit (cmu) dividing walls or side walls
- Partial height (48" high) cmu walls or side walls
- Stainless steel side panels with raised floors
- Stainless steel side panels with sloped wedge system
- Stainless steel side panels on zero slope curb

# Material Types

- Quality run gates are typically stainless steel tube frames with stainless steel rods.
- Isolation side panels are steel frames with steel rods on the top half of the panel and full stainless sheet on the bottom half.
- CMU wall top panels are typically stainless steel tube and rod.
- Glass gates, tops, and side panels are also common as are stainless and glass combinations.

# Standard Sizes (for Most Installations)

## Gate Widths (in.)

- 30"
- 36"
- 42"
- 48"

## Side Panel Length (in.)

- 48"
- 60"
- 72"

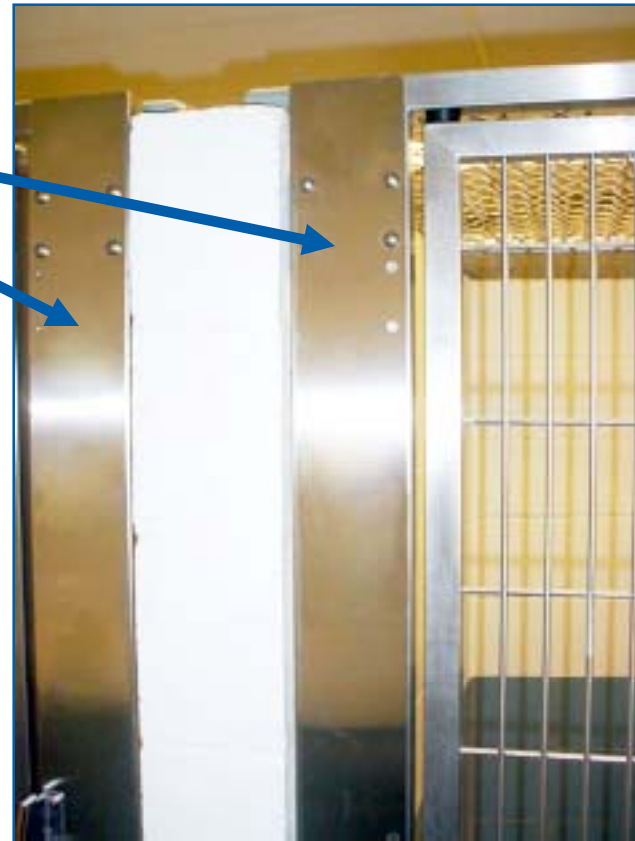
A few simple reasons these sizes fit most applications are: they install readily, they meet expectations, and they work.

# Important Lead-Time Information

- Choosing standard size gates and side panels for your facility provides you the shortest lead time for your order.
- We keep inventory on-hand for many of the standard size gates and side panels. Your Shor-Line Representative can give you a current list of items in stock and lead times.

# Adapters: 'Non-Standard' Gate Widths

- The adapters shown (otherwise known as 'filler panels') are used to fit standard size gates to non-standard size openings. This field adaptable, sturdy, and cost-effective solution can be delivered and installed in a timely manner.



*Special thanks to the City of Hurst Animal Services, Hurst, Texas*

# Adapters (continued): Installation Using Standard Width Gates

- Adapters readily fit standard size gates to a non-standard opening for a clean finished look.



*Special thanks to the City of Hurst Animal Services, Hurst, Texas*

# Important Lead-Time Information

- We keep adapters in stock should you choose to use them with standard size gates and side panels.
- This is your best option for short lead times when you have non-standard or variable run widths. However, if you choose to have custom/special size gates or side panels for each run, then lead times will lengthen considerably.

# Design & Construction Considerations

- Knowing and following applicable design and construction criteria will help you to achieve a successful animal housing facility.
- Knowing the difference between standard and custom/special size runs will help you to take steps to reduce purchase, installation, and replacement costs helping you to avoid making unnecessary or special accommodations to your facility before installation.
- Reviewing the PRO's and CON's of each type of system will help further guide you through the process.

# Full Height CMU Wall

## PROS

- Easy to install
- No cross contamination
- Many drain options
- Can be easy to pour facility floor

## CONS

- Can be dark
- Poor air flow
- High maintenance if painted
- Walls must be correctly spaced and square
- Coves must be considered

# Full Height CMU Walls

Note high ceilings.



# 48" High CMU Wall

## PROS

- Easy to install gates
- No cross contamination
- Many drain options
- Can be easy to pour facility floor
- Color can be added
- Open above for light and air flow

## CONS

- High maintenance if painted
- Walls must be correctly spaced and square
- Coves must be considered
- Need flag panels on top of side walls

# Wall System with Flag Panels



# CMU Wall System with Glass Gates & Flag Panels



# Stainless Side Panels with Raised Floor

## PROS

- No cross contamination
- No loss of space to drain system
- Gain space due to thin separating walls
- Adaptable to many floor conditions
- Best air flow
- Can be disassembled and moved
- Can install standard sizes and then 'finish' with customized gate

## CONS

- Added cost of floors
- Must step up into run
- Floors must be scrubbed periodically
- Panels are heavy during installation

# Raised Floor System



# Lifting Floors for Cleaning (These are Obviously in Need of Cleaning 😊)



# Stainless Side Panels with Sloped Wedge

## PROS

- Less worry over wall space
- Can be disassembled and moved
- Can install standard sizes and then finish with customized gate
- Fairly easy to install on proper floor
- Can use building floor for run floor
- Side walls are easy to clean
- Gain space due to thin separating walls

## CONS

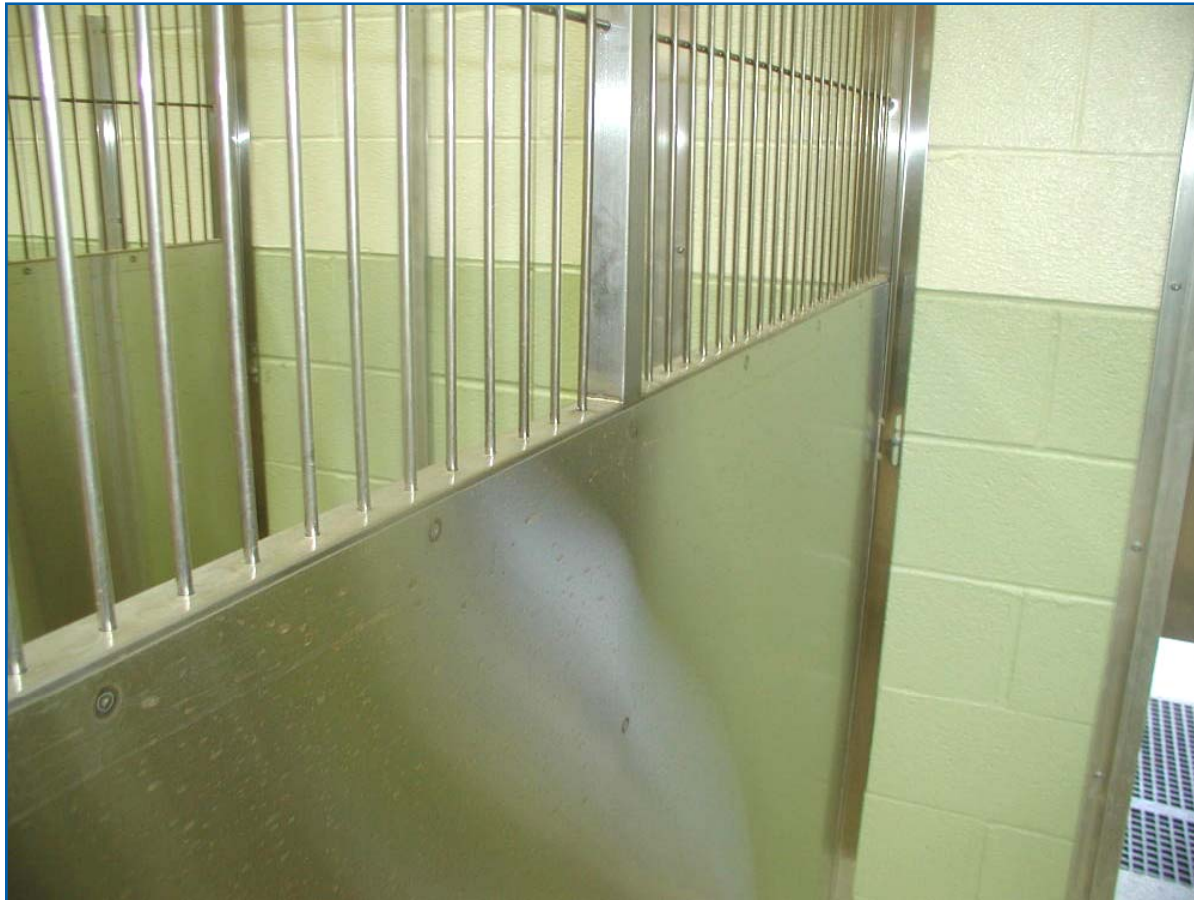
- Floor must be poured correctly
- Limited drain options (trench works best)
- Panels should be caulked at floor to reduce potential for cross contamination
- Panels are heavy to handle during installation
- Wedge requires field measure and cut
- Concrete floor must be sealed or treated

# Typical Modern Run Installation



*Special thanks to Greenbriar Pet Resort & Veterinary Center, Urbana, MD*

# Panel to Wall Assembly

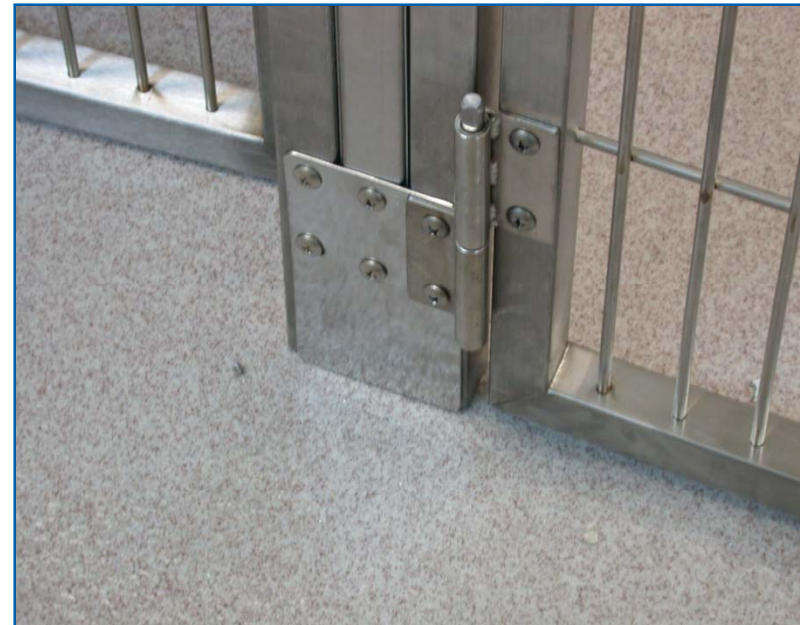


*Special thanks to Greenbriar Pet Resort & Veterinary Center, Urbana, MD*

# Epoxy Floor with Wedge System



The wedge and hardware are installed at the foot of the gate for a true 'fit and finished' look.



*Special thanks to Calgary Animal Referral & Emergency Centre, Calgary, Alberta, Canada*

# Stainless Side on Zero Slope Curb

## PROS

- Very simple installation
- Can be disassembled and moved
- Good option for individual drains
- Reduced risk of cross contamination due to curb and self-contained drainage
- Gain space due to thin separating walls

## CONS

- Curbs must be properly spaced
- Curbs must be level
- Panels may need to be caulked at top of curb
- Concrete floors must be sealed or treated

# Stainless Zero Slope Kennel



## Custom & Special Product

- Products shown are of standard design. The products prove their usefulness and effectiveness over years of application in the field. Changing standard dimensions requires more time in the pre-manufacturing stages of the process and also requires more active participation by the customer. This is the most time consuming option and can result in additional charges.

## Important Lead-Time Information

- Lead times on custom or special products are typically double that of standard products with similar quantities. Please note that a firm lead time for custom or special products cannot be formally quoted until specifications and drawings have first been approved by the customer and then reviewed and verified by Shor-Line manufacturing personnel.

# Options

- Of course there are options available for just about any run system. Some of these options are dependent on facility design, while some are not. It all depends on you, your facility, and the system you choose.

Options can include:

- Guillotine doors
- Drain covers
- Food and water bowls

# Guillotine Doors



*Special thanks to Grady Veterinary Hospital, Cincinnati, OH*



*Special thanks to Lake County Dog Shelter, Perry, OH*

# Drain Covers



*Special thanks to Greenbriar Pet Resort & Veterinary Center, Urbana, MD*

# Food & Water Bowl: Slide-Thru



*Special thanks to Sanlando Springs Animal Hospital, Longwood, FL*

# Food & Water Bowl Lazy Susan Rotating System



# Design Guidelines: For the Installation Types Discussed

- Facility design guidelines play an important role in the choice of a run system.
- Without renovation, most pre-existing construction lends itself to one type of system over another.
- For a new facility, having an understanding of design considerations beforehand will better facilitate the installation of your run system.

## Design Guidelines (continued)

- Design guidelines for each of the five systems are available from Shor-Line.
- It is vital to take design guidelines into consideration during the early planning stages of your new run system.
- Every construction project is different but they all have one similarity - and that is - failing to plan early is essentially planning to fail later.

# Opportunity

- The difference between what a business can do now and what a business could do in the future is an important concept - it's opportunity.
- And opportunity drives improvement – it always has.
- And while we seek to continually improve our goods and services; we also want to be part of your improvement efforts.
- We want to help you seize and take full advantage of the opportunity available to you.



*toll free* 800 *local* 913 *fax* 913  
444.1579 281.1500 281.5339

Shor-Line/Schroer Manufacturing Co.  
511 Osage Avenue  
Kansas City, KS 66105 U.S.A.

[www.shor-line.com](http://www.shor-line.com)

**SHOR-LINE**